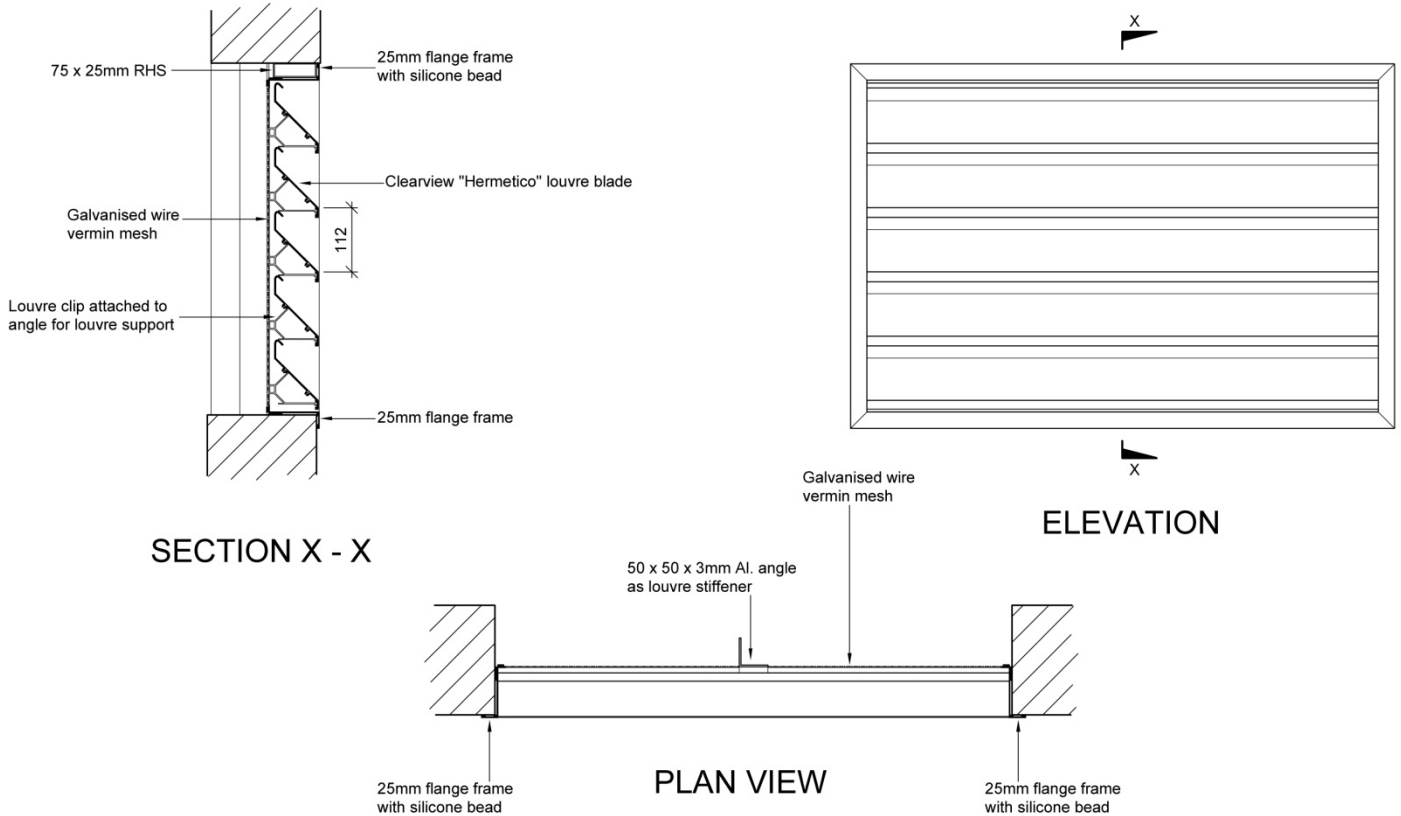


## Hermetico louvre blade – Technical Data



### Hermetico blade in flange frame

**Material:** Hermetico louvre blades are manufactured in mill finish aluminium to AS/NZS 1866.

**Finishes:** Louvres can be provided in mill finish, natural anodised or powder coat finish.

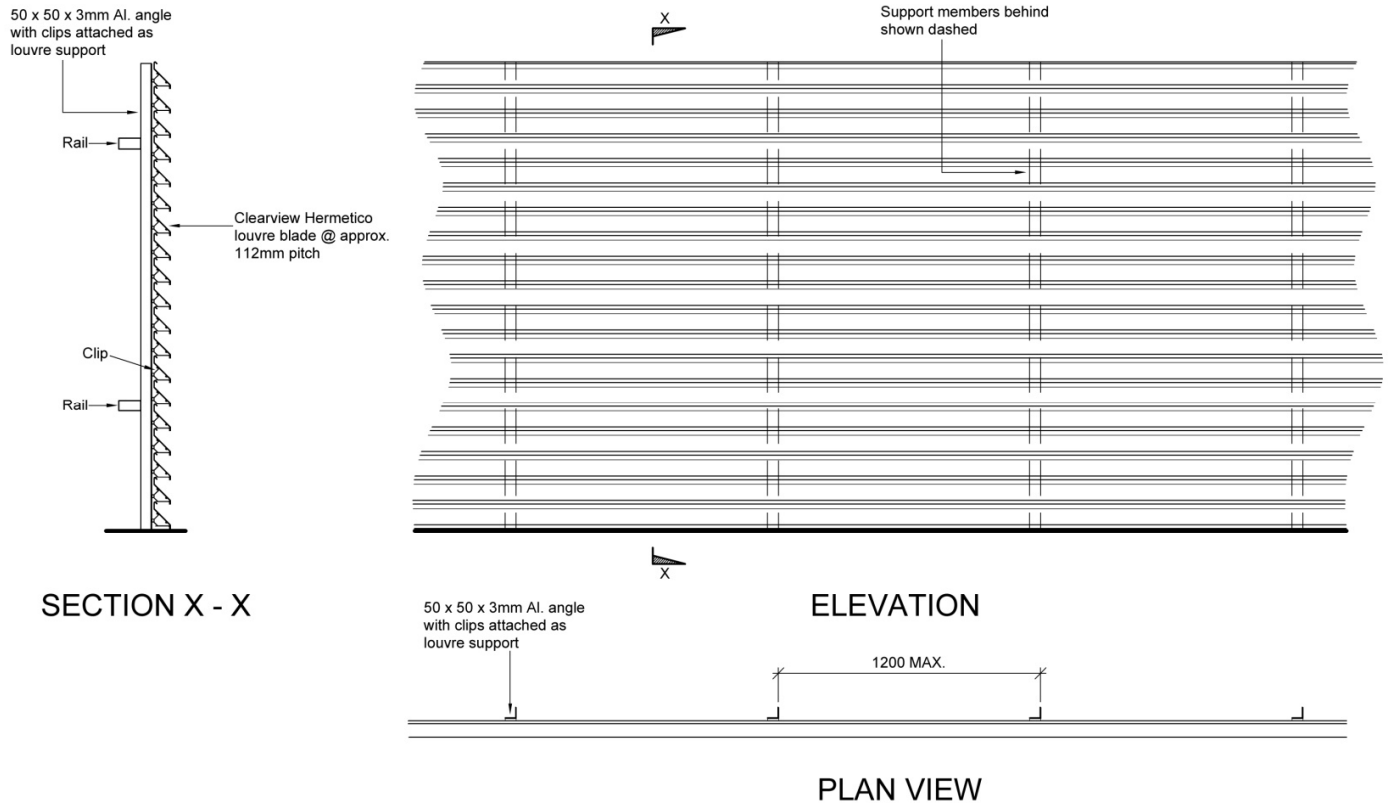
**Blade pitch:** Standard blade pitch is 112mm which provides 55% free air. If no louvre support is required, blade pitch can be varied to suit opening size.

**Bird mesh:** Clearview provides bird/vermin mesh as standard to all framed louvres.

**Mullions:** Where panel width is greater than 1500mm, louvre support angles are required at a maximum of 1200mm centres.

**Wind Loads:**

112mm pitch Wind Load KN/m <sup>2</sup>	Panel Width (mm)			Max. Panel Height
	1000	1250	1500	
1.0	3240	3000	2820	
1.5	2840	2635	2435	
2.0	2580	2325	2110	
2.5	2335	2080	1890	



## Hermetico blade in continuous screen

**Material:** Hermetico louvre blades are manufactured in mill finish aluminium to AS/NZS 1866.

**Finishes:** Louvres can be provided in mill finish, natural anodised or powder coat finish.

**Blade pitch:** Continuous blade pitch is 112mm which provides 55% free air.

**Bird mesh:** Bird/vermin mesh can be provided as an optional extra.

**Mullions:** Louvre support angles are required at a maximum of 1200mm centres.

**Fixings:** Typically, support angles will be fixed to structural steel at maximum 3000mm centres.

**Joints:** Blade joints will be located on clips to ensure blade alignment. Expansion gaps of 5mm must be provided for every 6000mm of blade length.

**Wind Loads:**

112mm pitch Wind Load KN/m <sup>2</sup>	Mullion Spacing (mm)		Max. Rail Spacing
	1000	1200	
1.0	2500	2000	
1.5	2230	1750	
2.0	2035	1515	
2.5	1860	1360	